

FOUNDATION DEGREE (FdA)  
WITH OPTIONAL 1 YEAR TOP-UP TO BA(Hons)

# SURFACE DESIGN

“This practical and industry focused course explores a wide range of applications to equip students with the skills and knowledge for an exciting career in surface design.”

Nick Rodgers  
COURSE LEADER

## ABOUT THE COURSE

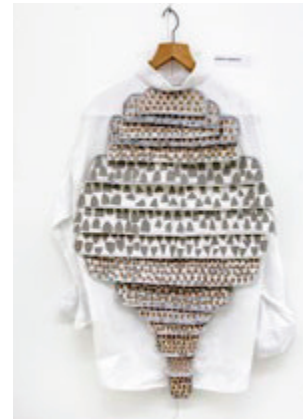
**Surface design is all around us. It gives texture and colour to our world whether through fashion, architecture, interior or retail design.**

This course explores a wide range of traditional and emergent approaches and applications to surface design. It aims to lead students into a number of relevant career paths or prepare them for further study.

The Foundation Degree in Surface Design is largely a practical course with an emphasis on project work. However it balances a development of hands-on creative skills with a study of materials and processes. Work-related learning and the development of a realistic understanding of industry practice are important elements within the course.

You will have opportunities to undertake placements in relevant industries and to engage with 'live' design projects. Time is given to team-working, business studies, Critical Studies and to reflect on your learning. This will enable you to develop the applicable skills that employers look for.

Students who successfully complete a Foundation Degree at the University College are able to progress to BA Honours Level Three, subject to the fulfilment of our entry criteria. We also accept applications to Level Three by Foundation Degree students from other institutions.



## LEVEL ONE

To begin we will introduce you to a range of technical knowledge, concepts and creative processes that will give you the opportunity to explore the possibilities of surface design. Through a range of projects you will consider surface design for a number of applications that may include paper, textiles (both fashion or interior) and product design. Particular attention is paid to the development of practical skills underpinned by visual and contextual research. Academic study will be supplemented with workshops, including screen-printing, drawing and CAD.

Level One comprises a number of projects of varying length that focus on specific design issues and aim to inspire you to be experimental in your approach to your work. Tuition and lectures from designers with successful careers in a variety of surface design industries ensure your learning is relevant to today's working practices.

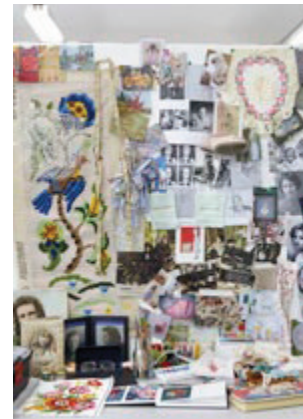


## LEVEL TWO

In Level Two you will start to pull all your learning together. Building upon your knowledge and skills you will start to consider how to frame design practice within the broad range of subjects as applied by industries that depend upon effective surface design. Workshops provide the opportunity to develop your practical talents further.

There will be an increased emphasis on critical evaluation of your work and that of fellow students. Work-related learning will continue through a selection of industry projects, national competitions and work placements. You will sometimes be expected to work as part of a team to develop transferable skills that are relevant to future career or study paths.

The year ends with the Final Major Project. This will be self-directed and will demonstrate the application of the knowledge, both theoretical and practical, that you will inevitably have accumulated throughout the course. This project should be designed to confirm your intentions to seek employment or to continue your studies to BA Honours degree level.



## WHAT MAKES US SPECIAL

Teaching on the course is delivered by a range of professionals who have a thorough understanding of the subject and its significance to the creative industries. The course has excellent facilities including digital surface design and production technologies. You will be encouraged to explore a wide range of materials in your work through access to NUCA's multiple technical workshops.

It is expected that a number of students will continue their education to BA Honours level before gaining employment in a surface design related industry. We would expect some graduates to define the markets they wish to be employed in. This may include combinations of textile design, packaging design, visual merchandising and the retail industry. Others may choose a career path based on a particular discipline.

**About You and Your Portfolio**  
The interview panel will require you to present a portfolio of your current work including drawing, research and the development of visual concepts. The panel will look for students with a wide variety of interests that are related to this Foundation Degree.

If you have any questions about the interview or selection process please contact the Course Administrator at the email address below.

**Qualifications**  
For details of entry qualifications please refer to page 94.

**The Small Print**  
UCAS Code: N39  
Course Code: Route A: W740

For further information please email:  
fdasurfacedesign@nuca.ac.uk